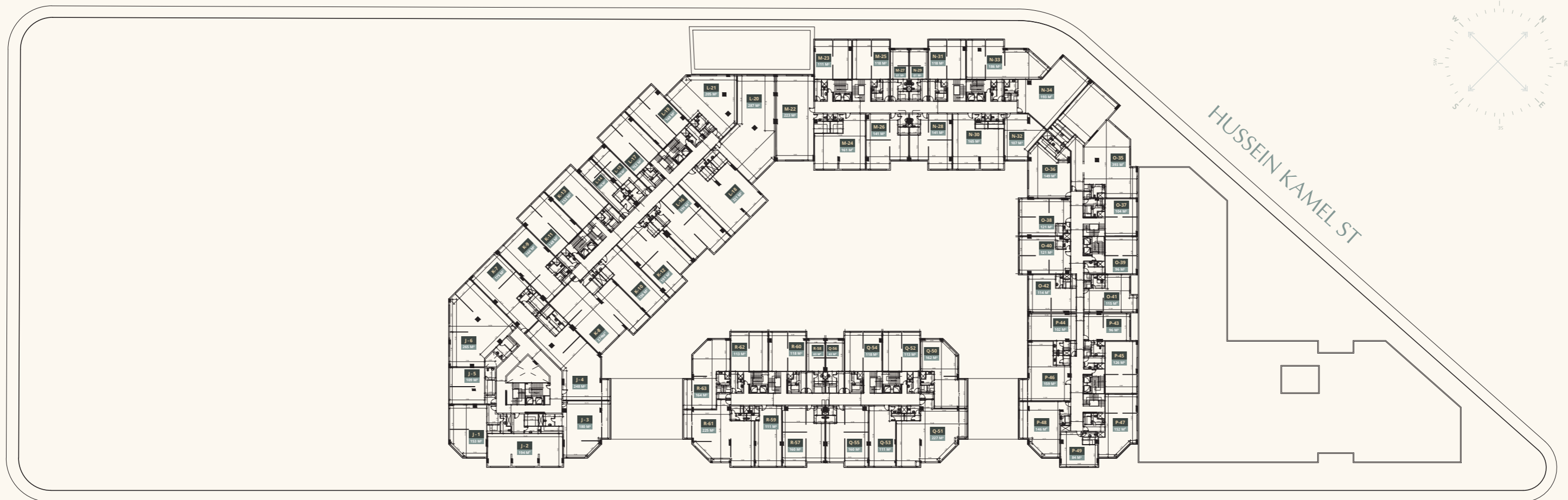


# VALORE EL.THAWRA ADMINISTRATIVE



FATHI AL KASHLAN ST



EL-THAWRA ST



**Horizontal Plane**  
For The Second Floor

Valore Since the healthy nutrition of any business is networking. Valore Thawra anchors an unprecedented location in the most vital part of Heliopolis to bring everything your work needs within your reach!

An advantageous location makes your business closer to a significant percentage of all your employees' residences. It also brings you closer to all business associates, making your business operation seamless & smooth while maximizing your exposure. Open up a world of infinite possibilities... while sparking collaborative exchanges for any business to thrive!

15 mins to the Airport | 25 mins to New Capital | 20 mins to 5th Settlement | 30 mins from Downtown